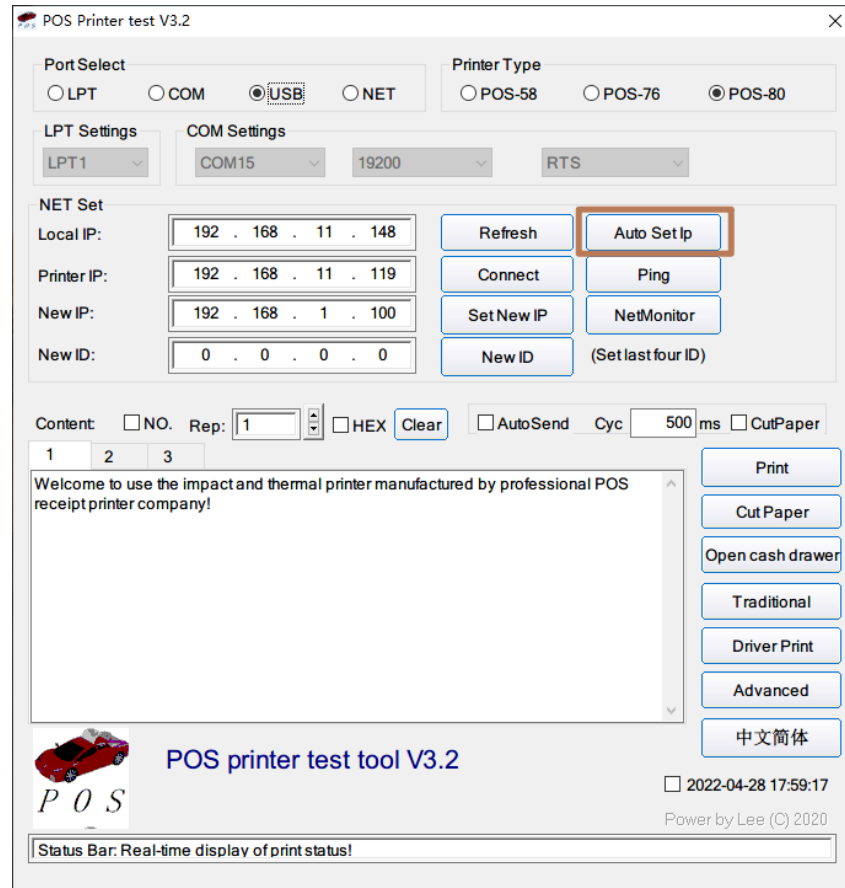


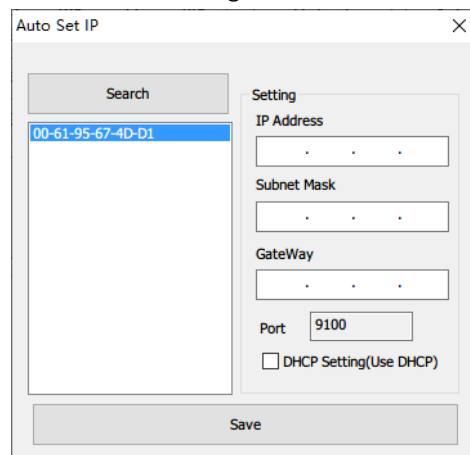
IP setting of POS Printer

IP setting of POS Printer steps:

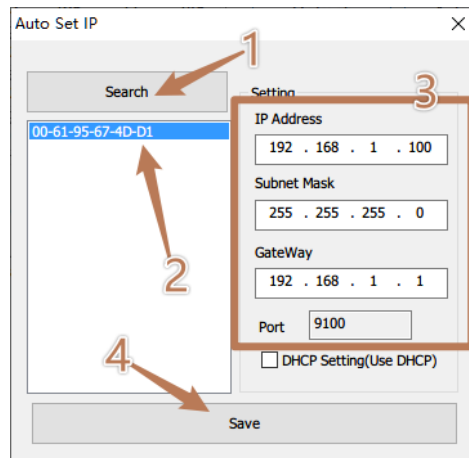
1. Connect Lan cable to the printer, it needs to connect to the same router as the computer.
2. Open the Printer test tool, “click Auto Set Ip”, as the following.



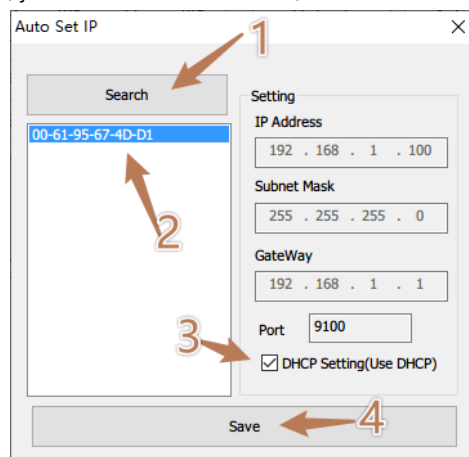
3. Click “Search” to search the printers on the LAN, if the LAN has printers, it will list the printer MAC address on the left side, as the following.



4. Double-click the printer MAC address, then will show the printer IP information at the right side, then you can change the IP of the printer, as the following.



5. If you want to set DHCP, just selected the DHCP, then click "Save".



6. After click "Save", the printer will restart automatically, then you can check the IP address by research again, or print the selftest page.

