

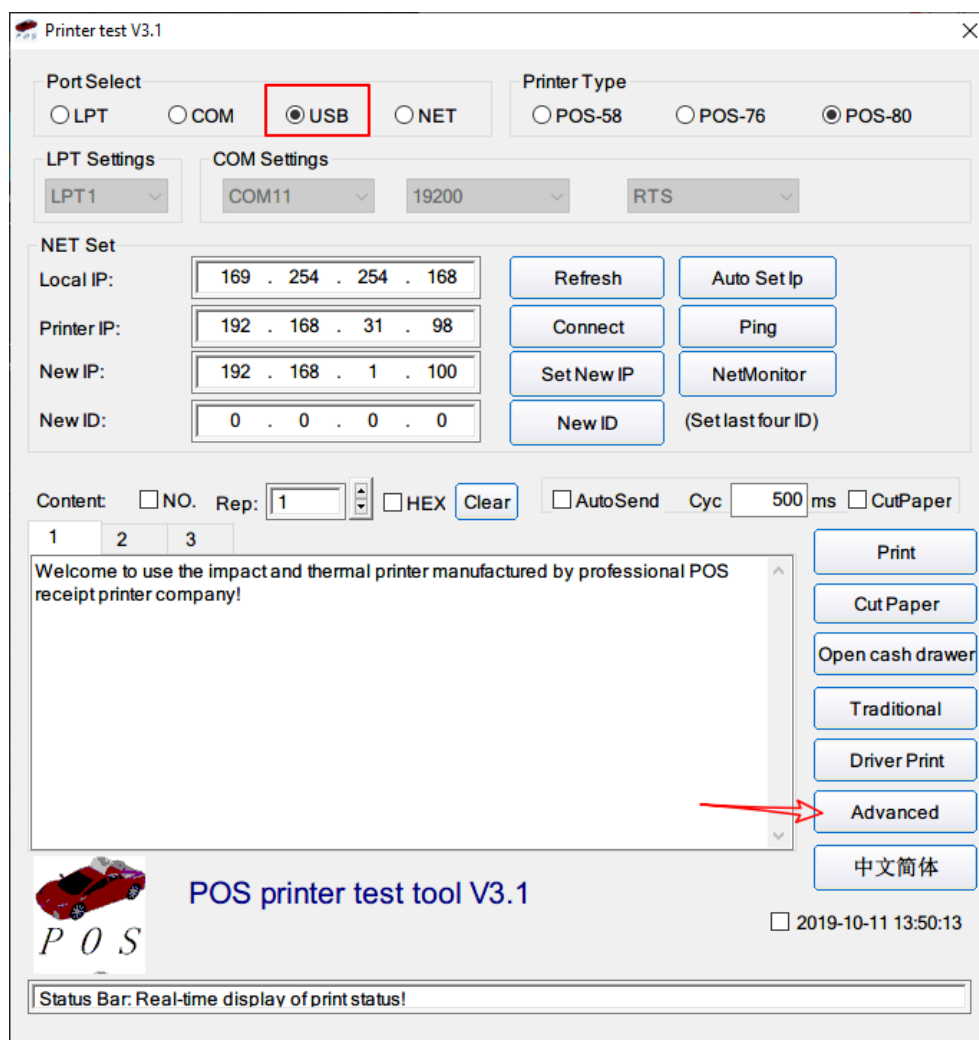
Installationsanleitung

PXR33009W WLAN Setup

Für die WLAN Einrichtung des Druckers PXR33009W benötigen Sie die beigelegte CD oder laden Sie die entsprechende Treiber/Tools von unserer Webseite www.ardax-tech.eu/Support runder.

Setting IP and Wi-Fi

1. Connect the printer to the computer via USB.
Open **Printer test V3.1**, Select USB than click Advanced, as bellow:



2. Click **SetNet**

Advanced ×

H Parameter Settings:	<input type="button" value="Print H"/>	<input type="button" value="Set Delta"/>	<input type="text" value="5"/>	▼
Code page Settings:	<input type="button" value="PrintCodePage"/>	<input type="button" value="SetCodePage"/>	<input type="text" value="0"/>	
NV Logo Test:	<input type="button" value="NV Download (1c 70)"/>		<input type="button" value="NV Download (1d 28)"/>	
Barcode Printing test:	<input type="button" value="Print BarCode"/>	<input type="text" value="UPC_A"/>	<input type="text" value="129"/>	▼ Height
P76 Buzzer Settings:	<input type="button" value="Set Buzzer"/>	<input type="text" value="OFF"/>	▼	
P76 Density Settings:	<input type="button" value="Set"/>	<input type="text" value="NORMAL"/>	▼	
P80 Black sens:	<input type="button" value="Set Sensitivity"/>	<input type="text" value="12"/>	<input type="text" value="12"/>	▼ <input type="checkbox"/> SensH
baud rate settings:	<input type="button" value="Set BaudRate"/>	<input type="text" value="19200"/>	▼	(Only P58 and P76E)
DIP Settings:	<input type="button" value="Set P58 DIP"/>	<input type="button" value="Set P80 DIP"/>	<input type="button" value="Set P76 DIP"/>	
2D Barcode test:	<input type="button" value="Print 2D Barcode"/>			
Net Settings:	<input type="button" value="Set Net"/>	<input type="button" value="Set Bluetooth"/>		
USB MODE Settings:	<input type="button" value="USB Printing"/>	<input type="button" value="Virtual COM"/>		
Black Mark Settings:	<input type="button" value="Set 80 BlackMark"/>	<input type="button" value="Set 76 BlackMark"/>		
File data send	<input type="button" value="Open File send"/>			
Cut With Beep	<input type="button" value="Cut With Beep Set"/>	<input type="text"/>		
InputBox Codepage:	<input type="text" value="1251 - Cyrillic(Windows)"/>			<input type="button" value="SET"/>

3. IP address and Wi-Fi settings.

Be careful, the printer IP and computer IP need to be in the same network segment.

After input all the information, then click “Set All”.

Net Settings

Net Settings

IP Address:

NetMask


GateWay

WiFi Settings

SSID:

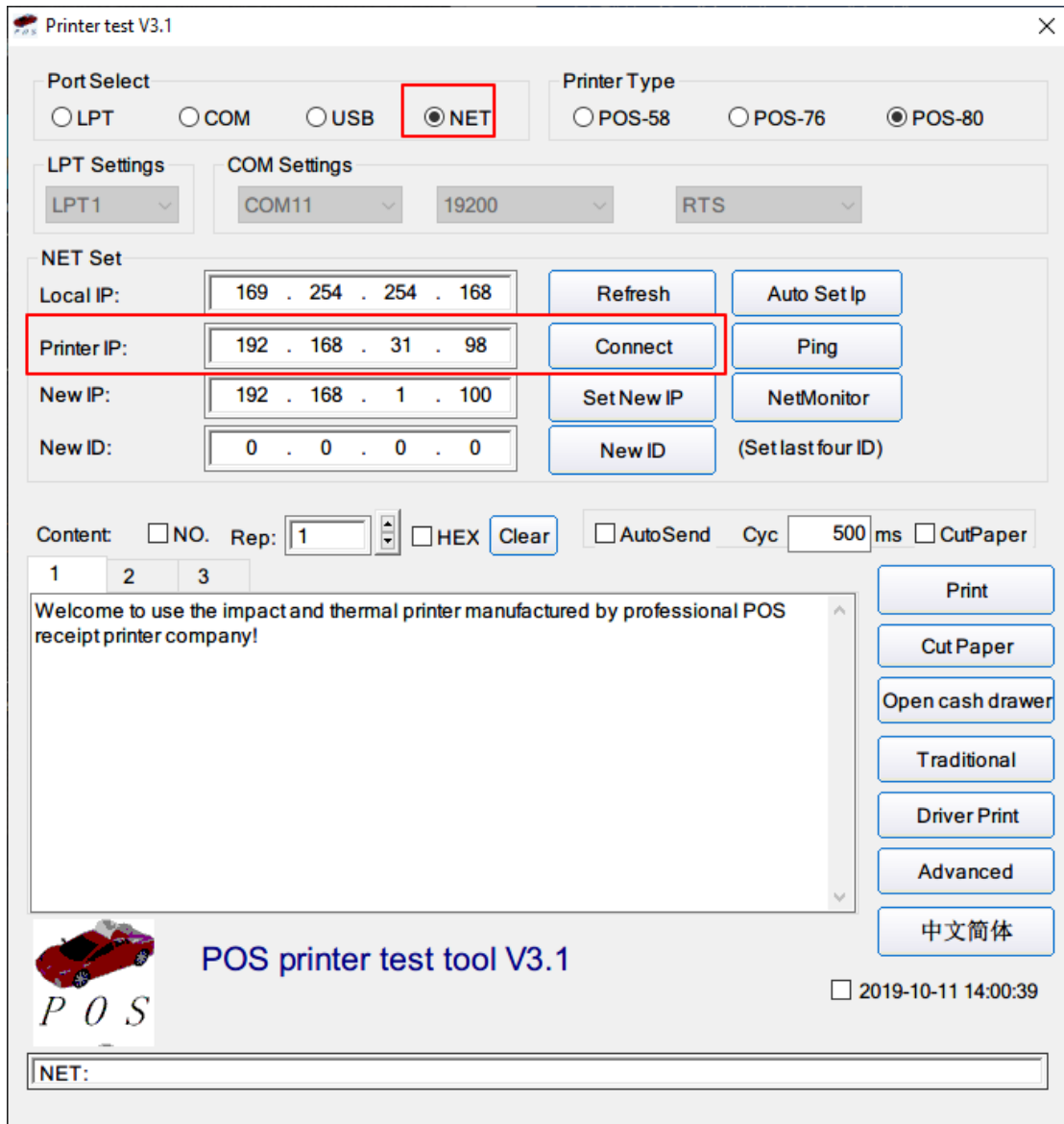
WiFi Key

Key Type

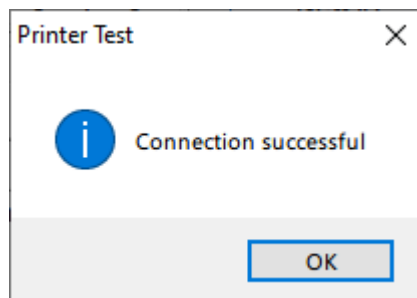
 P.O.S.

4. Test connection status.

Back to the Printer test V3.1 main window, and select **NET**, input the printer IP address, then click **Connect**.



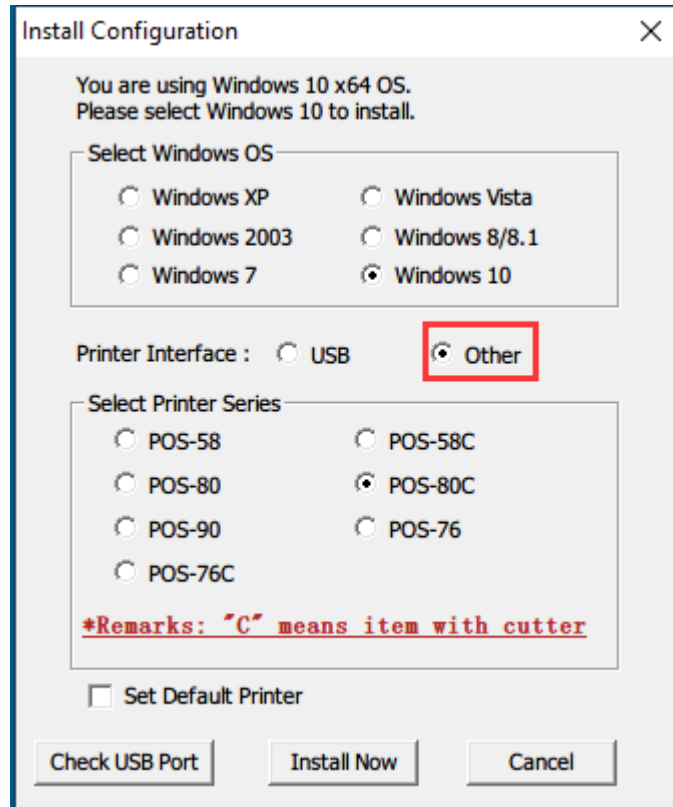
If everything is ok, you will see **Connection successful**.



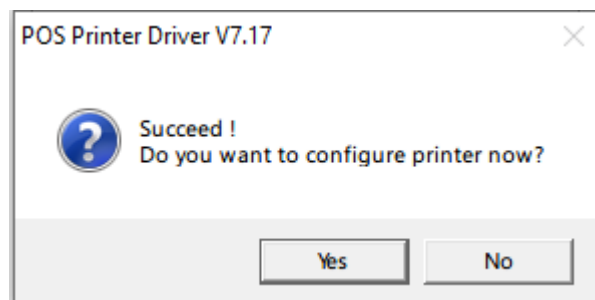
Install driver

Close Printer test V3.1.

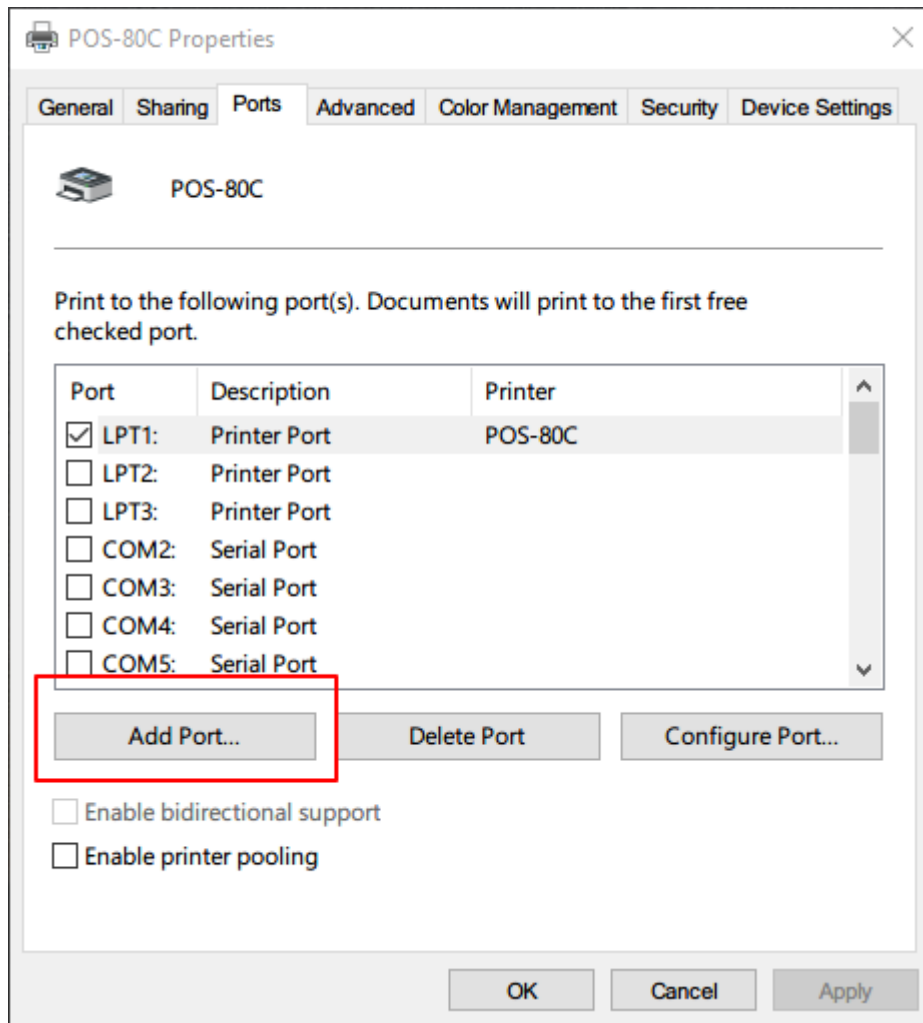
Open POS Printer Driver., Printer Interface select **Other**, then click **Install Now**.



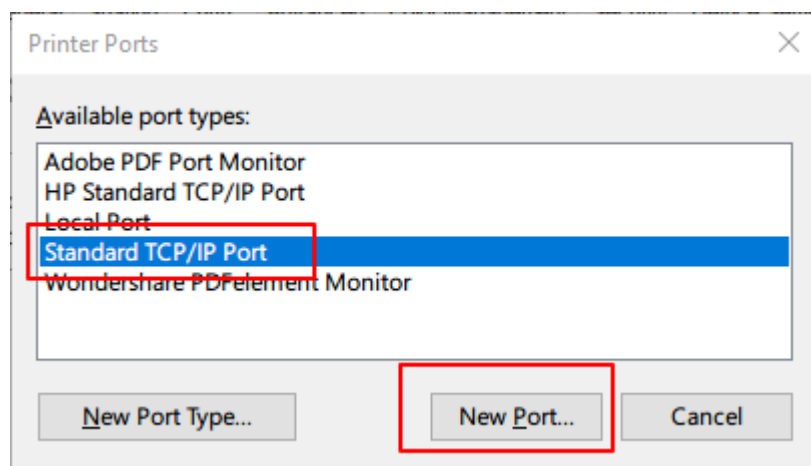
You will see the success message, click Yes.



Click **Add Port...**




Select **Standard TCP/IP Port**, then click **New Port....**



Click **Next**

Add Standard TCP/IP Printer Port Wizard



Welcome to the Add Standard TCP/IP Printer Port Wizard

This wizard helps you add a port for a network printer.

Before continuing be sure that:

1. The device is turned on.
2. The network is connected and configured.


To continue, click Next.

< Back **Next >** Cancel

Input Printer IP address, then click next.

Add Standard TCP/IP Printer Port Wizard

Add port
For which device do you want to add a port?



Enter the Printer Name or IP address, and a port name for the desired device.

Printer Name or IP Address:

Port Name:


Printer IP

< Back **Next >** Cancel


It may take a few minutes at this window.

Add Standard TCP/IP Printer Port Wizard

Detecting TCP/IP port
Windows is detecting the TCP/IP port and will move to the next page when finished.



Detecting the TCP/IP port...
Windows will automatically move to the next page when the detection is done.




< Back Next > Cancel

Click **Next**

Add Standard TCP/IP Printer Port Wizard

Additional port information required
The device could not be identified.



The device is not found on the network. Be sure that:

1. The device is turned on.
2. The network is connected.
3. The device is properly configured.
4. The address on the previous page is correct.


If you think the address is not correct, click Back to return to the previous page. Then correct the address and perform another search on the network. If you are sure the address is correct, select the device type below.

Device Type

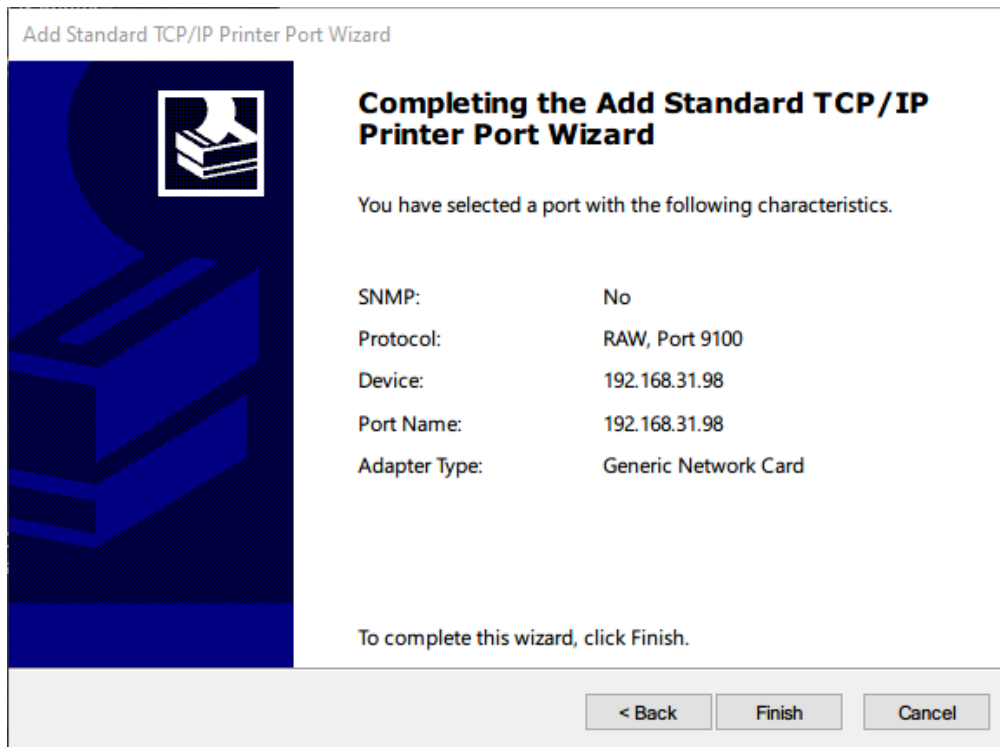
Standard Generic Network Card

Custom Settings...

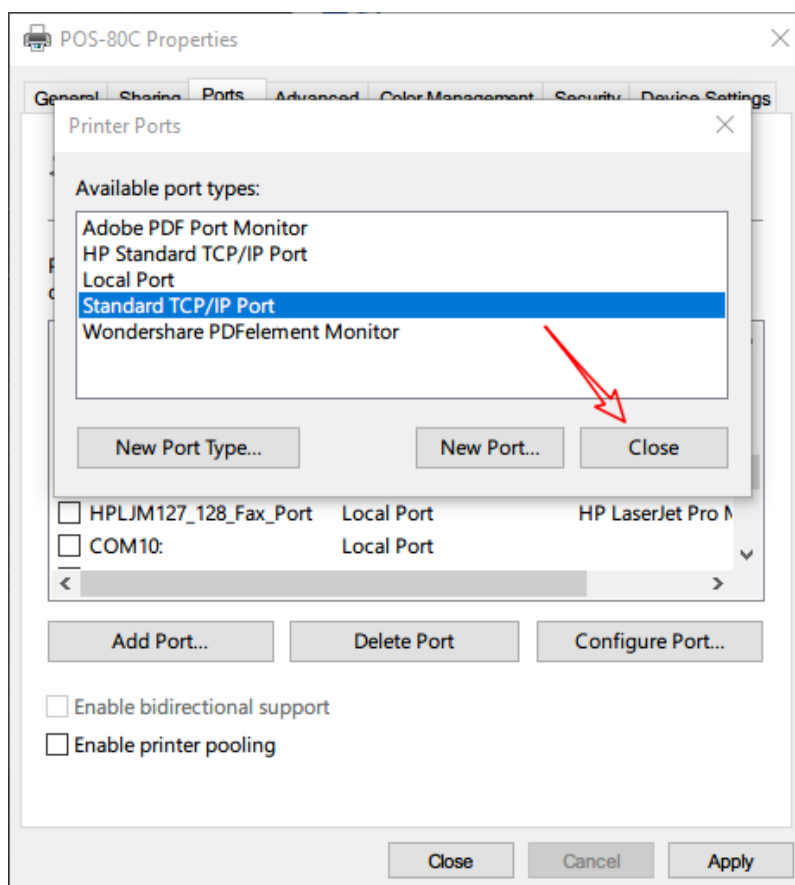
< Back **Next >** Cancel



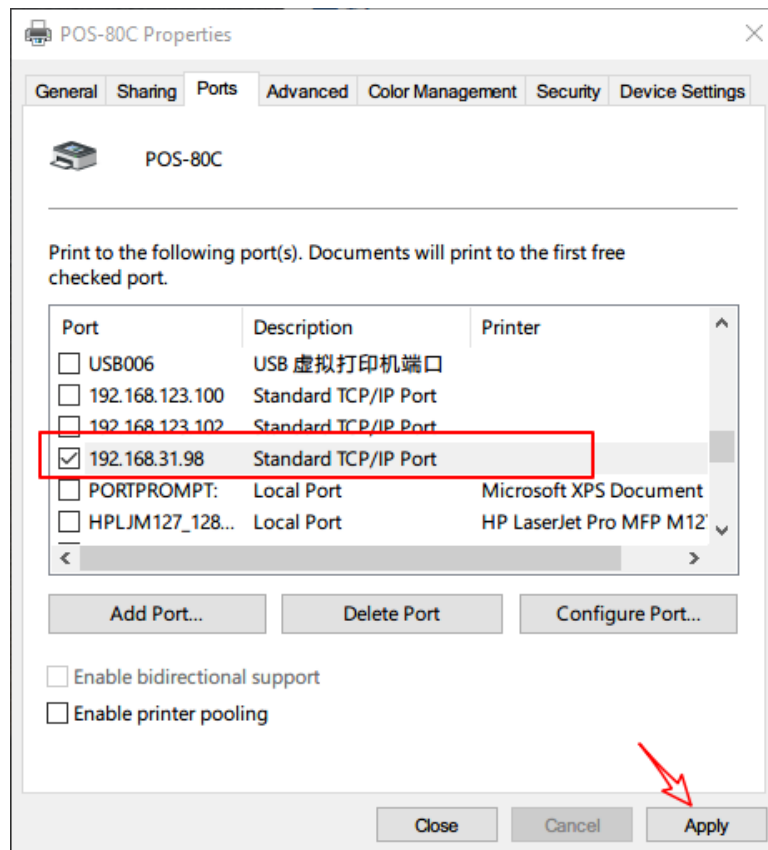
Click **Finish**.



Close the mini window of the Printer Ports, just click **Close**.



Select printer IP and click Apply



Test print, as bellow, if everything is ok, the printer will print a test page.

